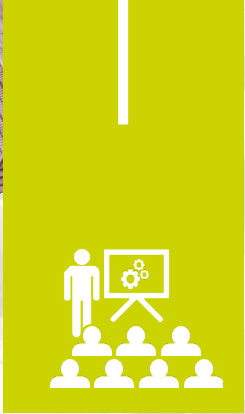




**KENYA SCHOOL OF GOVERNMENT**  
*Empowering the Public Service*  
**LOWER KABETE**

**2026**

**2027**



2026 - 2027 FY

# **TRAINING** Calendar





# Training Calendar

2026 - 2027 FY

---

## TRANSFORMING THE PUBLIC SERVICE THROUGH COMPETENCY DEVELOPMENT

I. The Kenya School of Government (KSG) is dedicated to the transformation of the Public Service by fostering the development of knowledge and competencies among public servants. This commitment aims to drive continuous improvement in the quality of services provided to citizens. The School achieves this through comprehensive capacity-building programs focusing on leadership and management-related issues, encompassing:

- a. Training designed to promote professional expertise and uphold public service values;
- b. Research initiatives aimed at enhancing institutional problem-solving capabilities;
- c. Consultancy services supporting the re-engineering of public institutions; and
- d. Advisory services contributing to policy reform.

II. The capacity development programs and services offered by the School are strategically aligned to meet citizens' expectations regarding institutional performance. Public officials are empowered to:

- a. Efficiently and promptly respond to citizen needs;
- b. Make services readily available and accessible;
- c. Discharge duties professionally;
- d. Embrace corruption-free behavior;
- e. Accommodate the views of citizens in decision-making processes; and
- f. Demonstrate patriotism by prioritizing public interest above personal interest.

III. The School acknowledges the pivotal role every public servant plays in realizing Government goals. Therefore, competency development programs are made available for all levels and categories of public officials, spanning from the lowest-ranking officers to the highest. These programs cater to public servants across Government ministries, state corporations, constitutional commissions, the Judiciary, legislature, and County Governments. The School also extends a warm welcome to trainees from the private sector, non-Governmental organizations, and foreign countries.

IV. Training activities take place at KSG campuses situated in Baringo, Embu, Lower Kabete, Matuga, and Mombasa. Additionally, the School offers online programs coordinated by the e-Learning and Development Institute, providing flexibility for participants. Training sessions may also be conducted at the clients' workstations or any other preferred venue.

V. Public servants attending KSG programs are typically either newly appointed or experienced officers in their respective fields. The caliber of faculty and trainers at the School consists of distinguished professionals with extensive knowledge, training, and, most importantly, rich practical experience in public sector leadership and management. Graduates from KSG are thoroughly prepared to serve in accordance with established professional standards.

VI. The School continually reviews existing programs and introduces new syllabi to address competency shortfalls in public servants and improve service delivery. Tailor-made training programs can also be developed upon request to meet the specialized requirements of individual public institutions.

VII. Admission into the programs is subject to the fulfillment of course prerequisites

CODE	PROGRAM	DURATION	RECOMMENDED CATEGORY OF STAFF	DATES	CHARGES
<b>EXECUTIVE LEADERSHIP PROGRAMS</b>					
<b>TLC</b>	<b>Transformative Leadership Course</b>	1 Week	Public officials and other individuals responsible for institutional and business re-engineering in their organizations.	Aug 17 - 21, 2026 Nov 23 - 27, 2026 Feb 22 - 26, 2027	105,000 ( Residential) 75,000(Non-Residential)
<b>SLDP</b>	<b>Strategic Leadership Development Program</b>	6 Weeks	Officers in leadership and policy making roles, typically in Job Grades N and above, and their equivalent.	July 6 – Aug 14,2026 Aug 17 – Sept 25,2026 Sept 28 – Nov 6,2026 Nov 9 – Dec 18, 2027 Jan 11 – Feb 19, 2027 Feb 22 – April 2, 2027 April 5 – May 14, 2027 May 17 – June 25, 2027 June 28 – Aug 6, 2027	266,815 (Exec. Residential) 240,357 (Std. Residential) 172,140 (Non-Residential)
<b>SLDP-O</b>	<b>Strategic Leadership Development Program</b>	9 Weeks	Officers in leadership and policy making roles, typically in Job Grades N and above, and their equivalent.	July 6 – Sept 11,2026 Sep14– Nov 20,2026 Jan 11 –March 19, 2027 March 22–28 May, 2027 May 31- Aug 6, 2027	149,280 (Online with 1 week physical class without accommodation) 169,280 (Online with 1 week accommodation)
<b>CGC</b>	<b>Corporate Governance</b>	1 Week	Officers in leadership positions or those preparing to take up such positions in the public and private sectors.	Sept 21 – 25 2026 Feb 22 – 26 2027	105,000 ( Residential) 75,000(Non-Residential)
<b>BETA</b>	<b>Bottom-Up Economic Transformation Agenda</b>	1 Week	Public and State officers involved in policy development, implementation, regulation, and monitoring, as well as stakeholders supporting the dissemination and execution of BETA.	28 Sept - 2 Oct 2026 26 - 30 Apr 2027	79,576(Exec.Residential) 60,649(Std. Residential) 44,774( Non-Residential)
<b>MANAGEMENT DEVELOPMENT PROGRAMS</b>					

CODE	PROGRAM	DURATION	RECOMMENDED CATEGORY OF STAFF	DATES	CHARGES
SMC	Senior Management Course	4 Weeks	Middle level managers in the public service typically in Job Grades K and their equivalent in private sector.	July 6 – 31, 2026 August 3 – 28, 2026 Aug 31 – Sept 25, 2026 28 Sept – Oct 23, 2026 Oct 26 – Nov20, 2026 Nov 23 – Dec 18, 2026 Jan 11 – Feb 5, 2027 Feb 8 – Mar 5, 2027 Mar 8 – Apr 2, 2027 April 5 – 30, 2027 May 3 – 28, 2027 May 31- June 25, 2027	255,316 (Exec. Residential) 197,618 (Std. Residential) 132,288( Non-Residential)
SMC-O	Senior Management Course-Online (Hybrid with physical exams)	8 Weeks	Middle level managers in the public service typically in Job Grades K and their equivalent in private sector.	July 6 – Aug 28, 2026 Aug 31 – Oct 23, 2026 Oct 26 – Dec 18, 2026 Jan 11 – Mar 5,2027 Mar 8 – April 30, 2027 May 3– June 25, 2027	92,800(Online without accommodation) 107,800 (Online with Accommodation during exam day)
PPFI	Public Policy Formulation and Implementation	1 Week	Manager responsible for developing policies.	Oct 26 – 30, 2026 Mar 22 – 26, 2027	79,576(Exec. Residential) 60,649(Std. Residential) 44,774(Non-Residential)
NSC	Negotiation Skills and Contract Management Course	1 Week	Officers responsible for stakeholder negotiations.	Oct 26 – 30, 2026 Mar 22 – 26, 2027	79,576(Exec. Residential) 60,649(Std. Residential) 44,774( Non-Residential)

CODE	PROGRAM	DURATION	RECOMMENDED CATEGORY OF STAFF	DATES	CHARGES
TOT	Training of Trainers	2 Weeks	Training practitioners, training managers, public officials, and private sector practitioners responsible for facilitation of programs.	Nov 9-20, 2026 Jan 4 – 15, 2027 Apr 12 – 23, 2027	154,675(Exec. Residential) 113,666(Std. Residential) 77,236(Non-Residential)
DSD	Digital Skills Development	2 Weeks	Administrators, Human resource and Human development officers, Innovation and Business development officers, Marketing managers, and Senior ICT officers	Aug 3 - 14 2027 Apr 19 - 30, 2027	154,675(Exec. Residential) 113,666(Std. Residential) 77,236(Non-Residential)
PDSA	Prevention of Alcohol, Drug and Substance Abuse	1 Week	Staff of all cadres including but not limited to: Executives, General Managers, Heads of Departments, Senior Managers, Drugs and Substance Abuse Committee Members, Peer Counsellors, Human Resource Staff, Chiefs and Sub-chiefs.	Oct 5 - 9, 2026 Feb 1- 5, 2027 May 24 - 28, 2027	79,576(Exec. Residential) 60,649(Std. Residential) 44,774( Non-Residential)
CMM	Conduct of Meetings and Minute Writing	1 Week	Officers in public and private sector organizations responsible for chairing or taking minutes in meetings.	Sept 14 – 18 2026 Jan 18 – 22 2027 March 1 - 5 , 2027	79,576(Exec. Residential) 60,649(Std. Residential) 44,774(Non-Residential)
RWC	Report Writing Course	1 Week	Officers responsible for preparation of reports	July 20-24 2026 Nov 23 – 27 2026 Jan 25-29,2027 May 24-28,2027	79,576(Exec. Residential) 60,649(Std. Residential) 44,774(Non-Residential)
PEEM	Government Protocol,	1 Week	Senior officers, protocol officers, event	Oct 12 – 16, 2026	79,576(Exec. Residential)

CODE	PROGRAM	DURATION	RECOMMENDED CATEGORY OF STAFF	DATES	CHARGES
	<b>Etiquette and Events Management</b>		managers, Front office staff, and other interested persons.	Feb 15 – 19, 2027 June 21-25,2027	al) 60,649(Std. Residential) 44,774( Non-Residential)
<b>RMC</b>	<b>Records Management Course</b>	4 Weeks	Officers responsible for maintenance of records	Oct 5– Oct 30, 2026 Feb 1 – Feb 26, 2027	255,316 (Exec. Residential) 197,618 (Std. Residential) 132,288 (Non-Residential)
<b>RPP</b>	<b>Retirement Planning Program</b>	1 Week	All employees in the public service.	July 20-24, 2026 Oct 12-16, 2026 Feb 8-12, 2027 June 7-18,2027	79,576(Exec.Residential) 60,649(Std. Residential) 44,774( Non-Residential)
<b>FIDP</b>	<b>Fraud Detection Investigation and Prevention</b>	1 Week	Law enforcement agents, internal auditors, treasurers, accountants and fund managers in all sectors.	Aug 4–8, 2026 Mar 22–26, 2027	79,576(Exec.Residential) 60,649(Std. Residential) 44,774( Non-Residential)
<b>AMC</b>	<b>Asset Management Course</b>	1 Week	Officers responsible for development and management of assets and liabilities, and maintenance of asset registers.	Aug18–22 2026 April 19–23 2027	79,576(Exec.Residential) 60,649(Std. Residential) 44,774( Non-Residential)
<b>FARA</b>	<b>Financial Accounting, Reporting and Analysis</b>	1 Week	Accounts, finance and treasury officers in the public sector.	Sept 1–5 2026 May 3–7 2027	79,576(Exec.Residential)

CODE	PROGRAM	DURATION	RECOMMENDED CATEGORY OF STAFF	DATES	CHARGES
					60,649(Std. Residential) 44,774( Non-Residential)
IPSAS	International Public Sector Accounting Standards	2 Weeks	Accountants, finance officers, asset managers and auditors.	Sept 14–25, 2026 April 12–23, 2027	215,800(Exec. Residential) 156,507(Std. Residential) 97,800(Non-Residential)
FIPSA	Financial Reporting Under IPSAS Accrual	1 Week	The Program targets Officers and Managers involved in Public Finance Management. These include; Finance Officers, Accountants and Auditors.	Sept 28 –Oct 2, 2026 April 26–30, 2027	79,576(Exec. Residential) 60,649(Std. Residential) 44,774( Non-Residential)
PSFM	Public Sector Finance Management	4 Weeks	Officers responsible for public finance management	Oct 19–Nov 13 2026 May 17–June 11 2027	255,316 (Exec. Residential) 197,618 (Std. Residential) 132,288( Non-Residential)
PFM	Public Finance Management Course	1 Week	Officers responsible for budgeting, revenue policy, financial reporting and the financial advisory functions in the national and county governments, private sector and NGOs.	Nov 30–Dec 4, 2026 July 5–9 2027	79,576(Exec. Residential) 60,649(Std. Residential) 44,774(Non-Residential)
PPCM	Public Procurement & Contract Management	1 Week	Senior managers and Accounting officers responsible for providing general oversight of the procurement process.	September 21-25,2026 June 21-25, 2026	79,576(Exec. Residential) 60,649(Std. Residential)

CODE	PROGRAM	DURATION	RECOMMENDED CATEGORY OF STAFF	DATES	CHARGES
					44,774(Non-Residential)
<b>RPW</b>	<b>Research Proposal Writing</b>	1 Week	Officers with research responsibilities and individuals enrolled in postgraduate programs	July 20–24, 2026 Feb15–19, 2027	79,576(Exec.Residential) 60,649(Std. Residential) 44,774(Non-Residential)
<b>PMER</b>	<b>Project Monitoring, Evaluation &amp; Reporting</b>	2 Weeks	All public officers responsible for project management	Sept 7–18, 2026 Feb 6–17, 2027 May 5–16, 2027	154,675(Exec.Residential) 113,666(Std. Residential) 77,236(Non-Residential)
<b>PDM</b>	<b>Project Development &amp; Management</b>	4 Weeks	Project managers, engineers, architects, surveyors, and other professionals responsible for developing and managing projects	Nov 2–27, 2026 Mar 1–26, 2027	255,316 (Exec. Residential) 197,618 (Std. Residential) 132,288( Non-Residential)
<b>PPM</b>	<b>Project Planning and Management</b>	4 Weeks	Project managers, planners, agricultural officers, economists, human resource managers and other professionals responsible for project planning and management	Aug 24 –Sep18, 2026 Feb 22–Mar 19, 2027 May 17–June11, 2027	255,316 (Exec. Residential) 197,618 (Std. Residential) 132,288( Non-Residential)
<b>RBME</b>	<b>Results-Based Monitoring &amp; Evaluation</b>	2 Weeks	Officers responsible for project development and management from all sectors.	Nov16–27 2026 April 26 –May 7, 2027 June 19–30 , 2027	154,675(Exec.Residential) 113,666(Std. Residential) 77,236(Non-Residential)

## APPLICATION PROCEDURE

To ensure a smooth application process, kindly follow the outlined steps below:

Access the Course application portal by clicking on the following link: [KSG APPLICATION LINK](#).

Create an account on the portal. Upon account creation, you will receive an email with a confirmation link. Please check both your inbox and spam folder, as sometimes the confirmation link may be filtered into the spam folder.

Click on the confirmation link received in your email to activate your account and proceed with the application process. When applying for the course, please ensure to select the appropriate campus, either Nairobi or another campus, and choose the dates that are convenient for you.

After successfully submitting your application, the system will automatically generate a proforma invoice. You can access and download this invoice from your participant portal, where you made the application.

It is essential to print or download the proforma invoice for your records. We will process your offer letter accordingly.

Should you have any queries or require further clarification during the application process, please do not hesitate to contact us on [info@ksg.ac.ke](mailto:info@ksg.ac.ke). We are here to assist you every step of the way.

### Charges for Customized Trainings out of Campus

1. **Participant Group: Less than 25**
  - Charges range from Ksh 177,042 to Ksh 118,042 per day.
2. **Participant Group: More than 25**
  - Charges range from Ksh 4722 per person per day.
3. **Training at KSG**
  - Additional charges apply for:
    - **Accommodation:** Ksh 5,000 per person per night
    - **Day Meals:** Ksh 2,500 per person per day
4. **Training Outside KSG**
  - Additional training administrative charges will be included, covering transport and daily subsistence allowance (DSA) for facilitators, as per the SRC recommended rate.

### In-House Preferred Courses

Charges for in-house preferred courses will be determined by the following factors:

- Level of participants and nature of training
- Number of training days
- Number of participants
- Training location

### CONSULTANCIES

Kshs. 177,042 per day for consultancies.

Other administrative charges will be included as per agreement

If the consultancy is out of KSG, charges will be included such as the transport and accommodation charges for the consultants as per the SRC recommended rate.

For more information contact us:

<b>KSG LOWER KABETE</b>	<b>KSG MOMBASA</b>
Admissions Office Kenya School of Government P.O BOX 23030-00604 Lower Kabete Tel: +254-20-4015000 Cell: 0727 496-698 Email: <a href="mailto:info@ksg.ac.ke">info@ksg.ac.ke</a>	Admissions Office Kenya School of Government P.O. Box 84027 - 80100 Mombasa, KENYA. Tel: (041) 2312785/2227113/ 2228800 / 2226871 Email: <a href="mailto:admissions.mombasa@ksg.ac.ke">admissions.mombasa@ksg.ac.ke</a>
<b>KSG MATUGA</b>	<b>KSG BARINGO</b>
Admissions Office Kenya School of Government P.O Box 31-80406 MATUGA Tel: 0770770021 Email: <a href="mailto:admissions.matuga@ksg.ac.ke">admissions.matuga@ksg.ac.ke</a> <a href="mailto:info.matuga@ksg.ac.ke">info.matuga@ksg.ac.ke</a>	Admissions Office Kenya School of Government P.O Box 91 - 30400 Kabarnet Tel: 053-22056/22325/0733900019 Email: <a href="mailto:admission.baringo@ksg.ac.ke">admission.baringo@ksg.ac.ke</a>
<b>KSG EMBU</b>	<b>KSG eLDi</b>
Admissions Office Kenya School of Government P.O Box 402-60100 Embu Tel: (068) 2231824/ 2231364/ 0792718171 / 0733900035 Email: <a href="mailto:admissions.embu@ksg.ac.ke">admissions.embu@ksg.ac.ke</a> / <a href="mailto:info.embu@ksg.ac.ke">info.embu@ksg.ac.ke</a>	Admissions Office Kenya School of Government P.O. Box 30627 00100, Lower Kabete, Kenya Tel: 020-3535873 / 4 Mob: +254-728-606991 Email: <a href="mailto:info.eldi@ksg.ac.ke">info.eldi@ksg.ac.ke</a>

